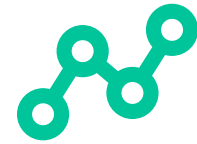
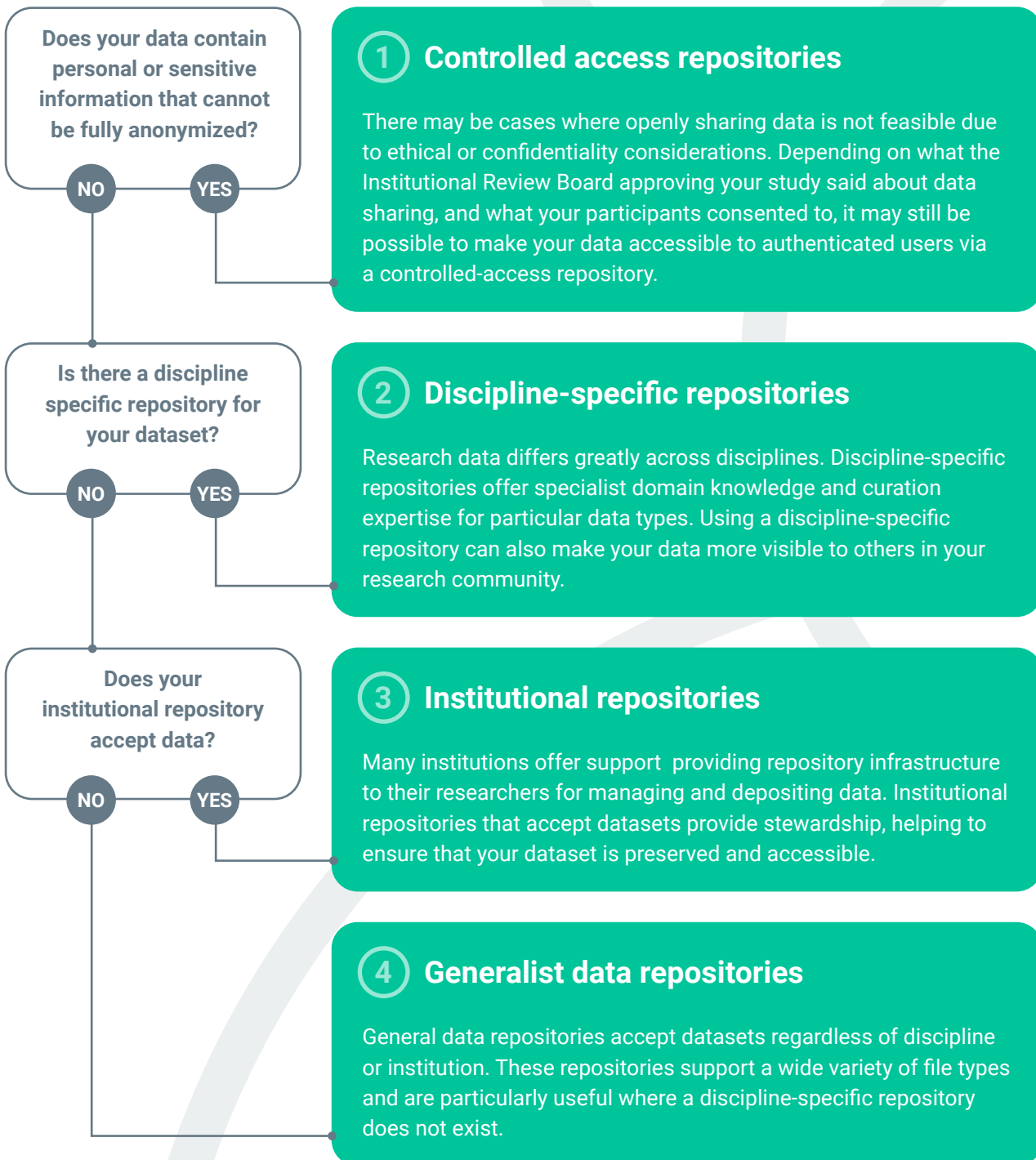


# Open Data Repositories



Depositing your data in a publicly accessible repository which assigns a globally persistent identifier ensures that your dataset continues to be available to both humans and machines in a usable format in the future. Funders and journals often maintain a list of endorsed repositories for your use. Still, choosing the best repository from such lists can often be daunting. Here, we offer some preliminary guidance on how to select a data repository.



## Metadata

To aid discoverability, data should also be described using appropriate metadata; additional contextual information that allows others to understand your dataset. The content and format of metadata is often guided by a specific discipline and/or repository through the use of a metadata standard. Regardless of the repository you choose, when depositing your data it is important that you provide as much information as possible for your metadata record.

## Versioning

Some repositories accommodate changes to deposited datasets through versioning. Selecting a repository that features versioning gives you the flexibility to add new data, restructure, and make improvements to your dataset. Each version of your dataset is uniquely identifiable and maintained – meaning others can find, access, reuse, and cite whichever version of the dataset they require.





## Software

Software and code are important research outputs. In addition to using a version control system such as GitHub, you should deposit your source code in a data repository where it will be assigned a unique identifier. Using such a repository will ensure your code is openly and permanently available.

## Data and code

Where you have both data and code, you should consider using a reproducibility platform like Code Ocean. Depositing your data and code in such a platform means that others can easily re-run your analyses, thereby promoting computational reproducibility.

## Toolbox

-  [Re3Data](#)
-  [FAIRsharing](#)
-  [FAIR Repository Finder](#)
-  [Making Your Code Citable](#)



### Caution!

Hosting your data solely on a laboratory website or as part of a publication's supplementary material hinders findability and reuse.



### Caution!

Where you deposit your data will depend on any applicable legal and ethical factors, who funded the work, and where you are hoping to publish.